

Supporting Information

Incorporation of Chemoselective Functionalities into Peptoids via Solid-Phase Submonomer Synthesis

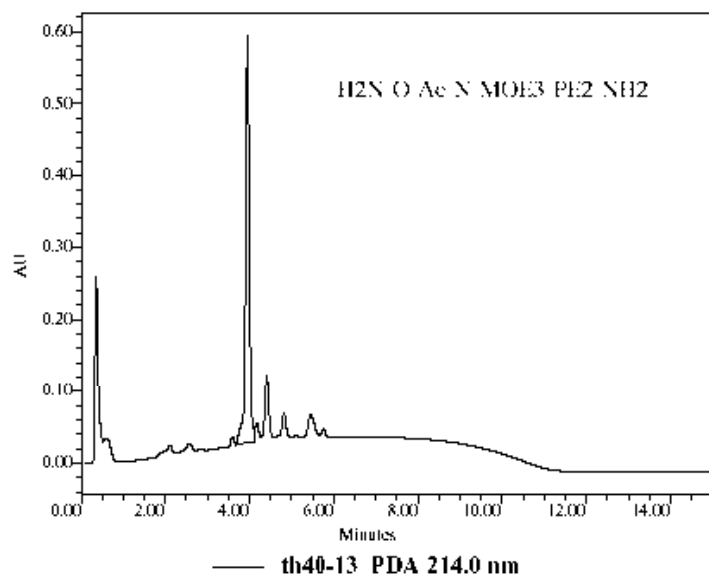
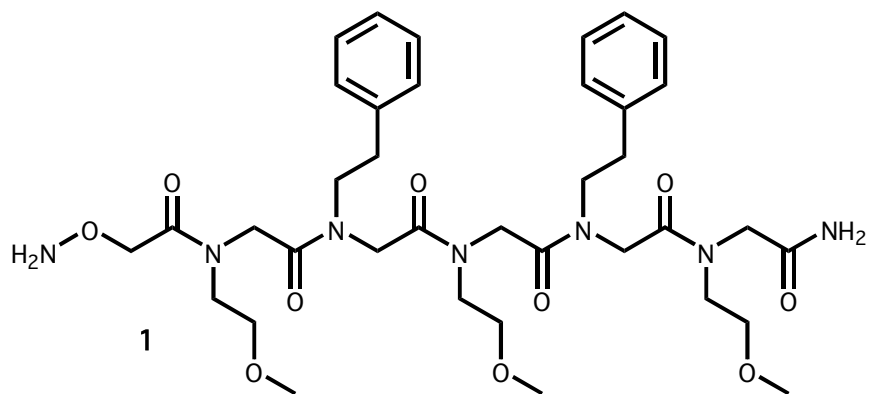
*Thomas Horn**, *Byoung-Chul Lee[†]*, *Ken A. Dill^{††}*, and *Ronald N. Zuckermann**

Chiron Corporation, 4560 Horton Street, Emeryville, CA 94608.

email: thomas_horn@chiron.com, ron_zuckermann@chiron.com

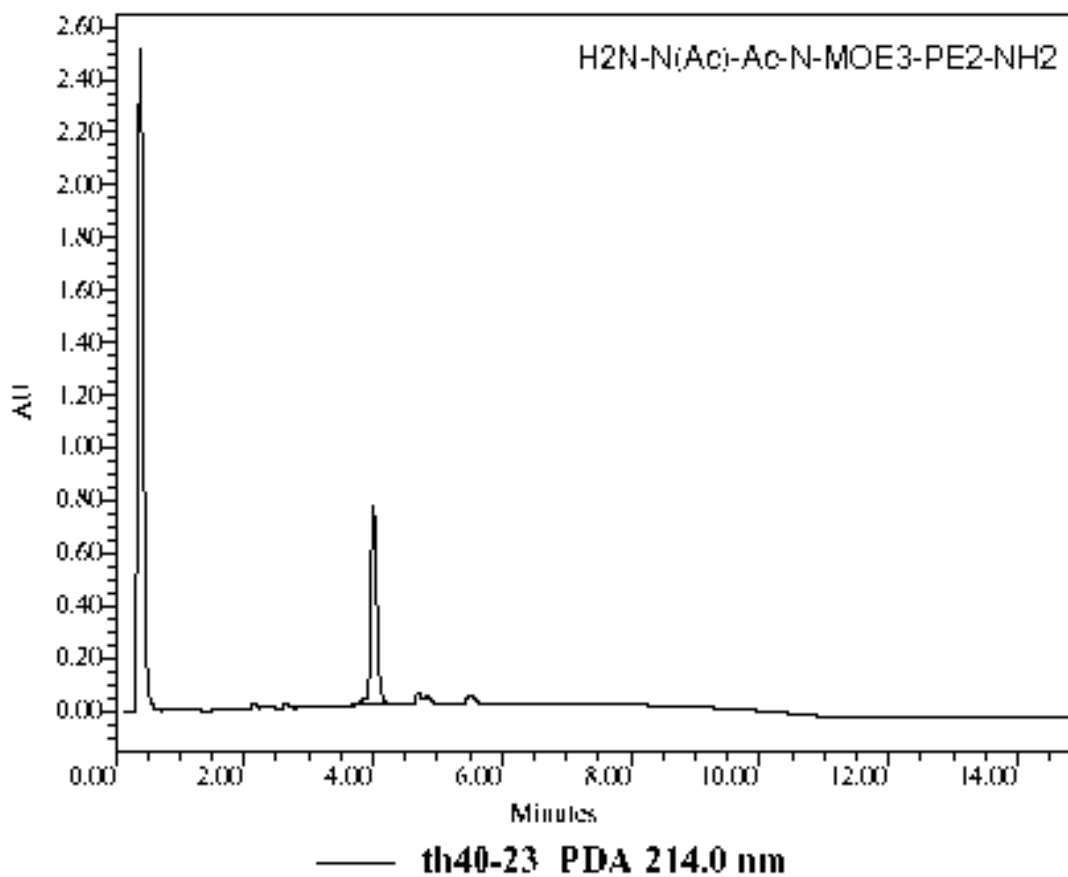
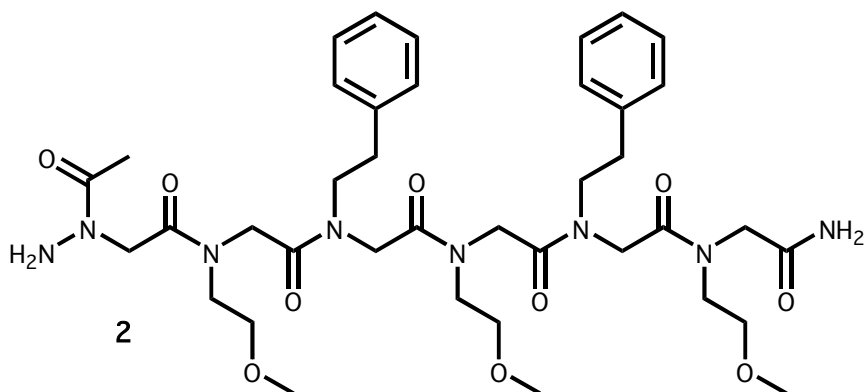
[†]Graduate Group in Biophysics, and ^{††}Dept. of Pharmaceutical Chemistry, University of California, San Francisco, CA 94143

Total 16 pages



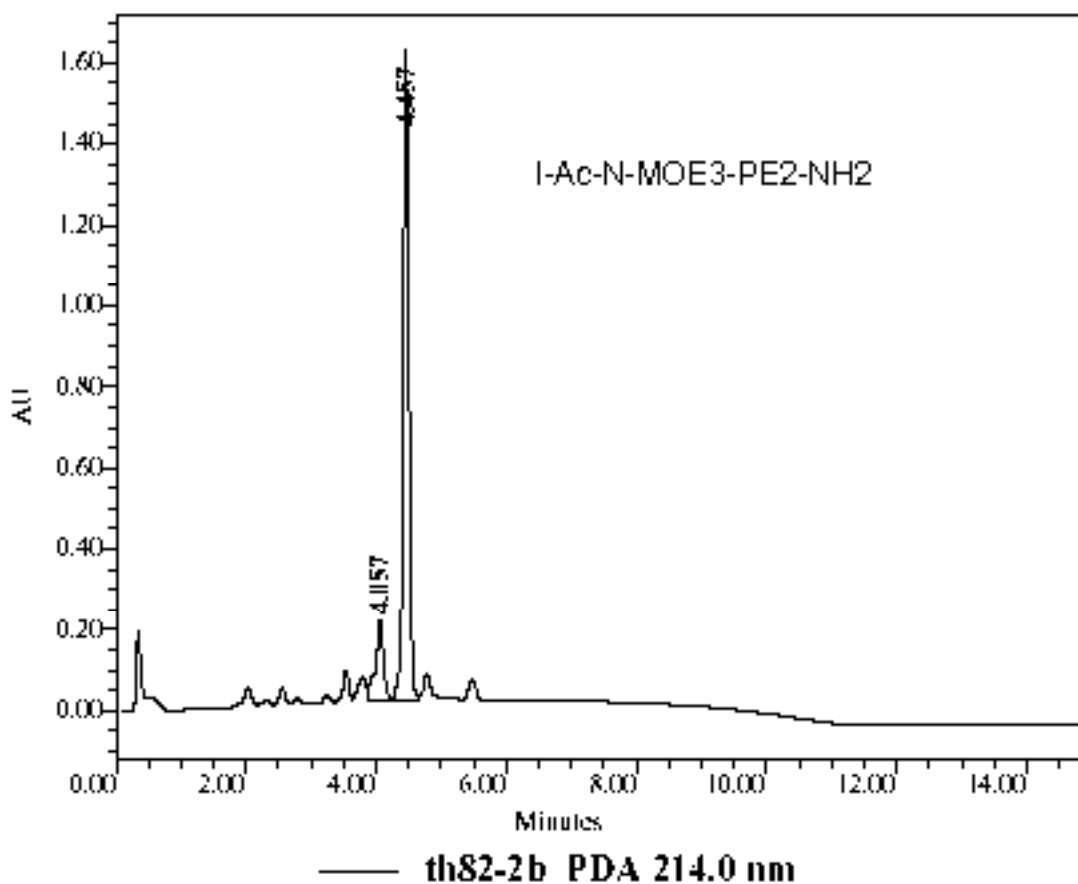
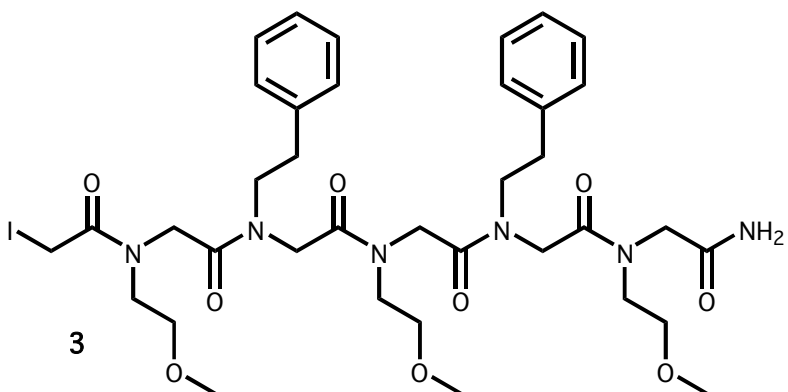
Peak Results C18_Meth_5_95_10min_1mlmin_60C 10/19/01 4

	RT	Area	Height	% Area	% Height	Start Time	End Time
1	3.95	3565758	564697	100.0	100.0	3.667	4.117
Sum		3565758.2	564696.7	100.0	100.0		
Count							



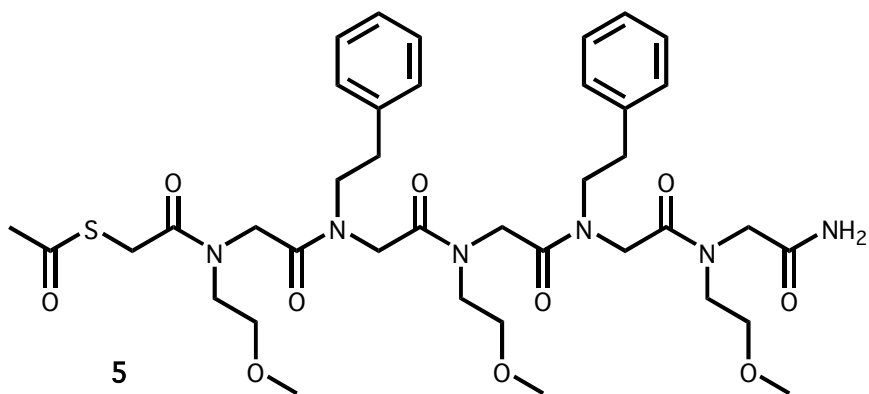
Peak Results C18_Meth_5_95_10min_1mlmin_60C 10/4/01 7:

	RT	Area	Height	% Area	% Height	Start Time	End Time
1	4.01	4965023	755264	100.0	100.0	3.660	4.277
Sum		4965023.0	755264.3	100.0	100.0		
Count							

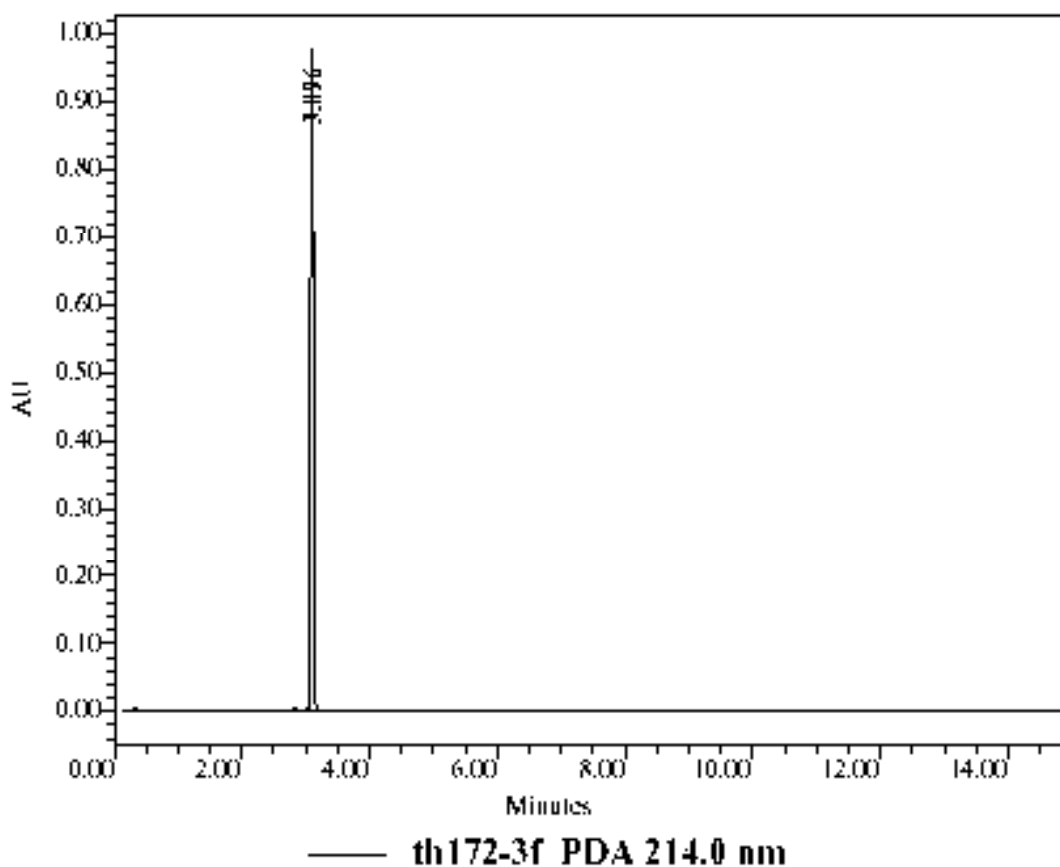


Peak Results C18_Meth_5_95_10min_1mlmin_60C 11/7/01 4:

	RT	Area	Height	% Area	% Height	Start Time	End Time
1	4.06	1671885	198901	15.0	11.1	3.870	4.237
2	4.46	9486387	1598997	85.0	88.9	4.237	4.670
Sum		11158272.1	1797897.7	100.0	100.0		
Count							

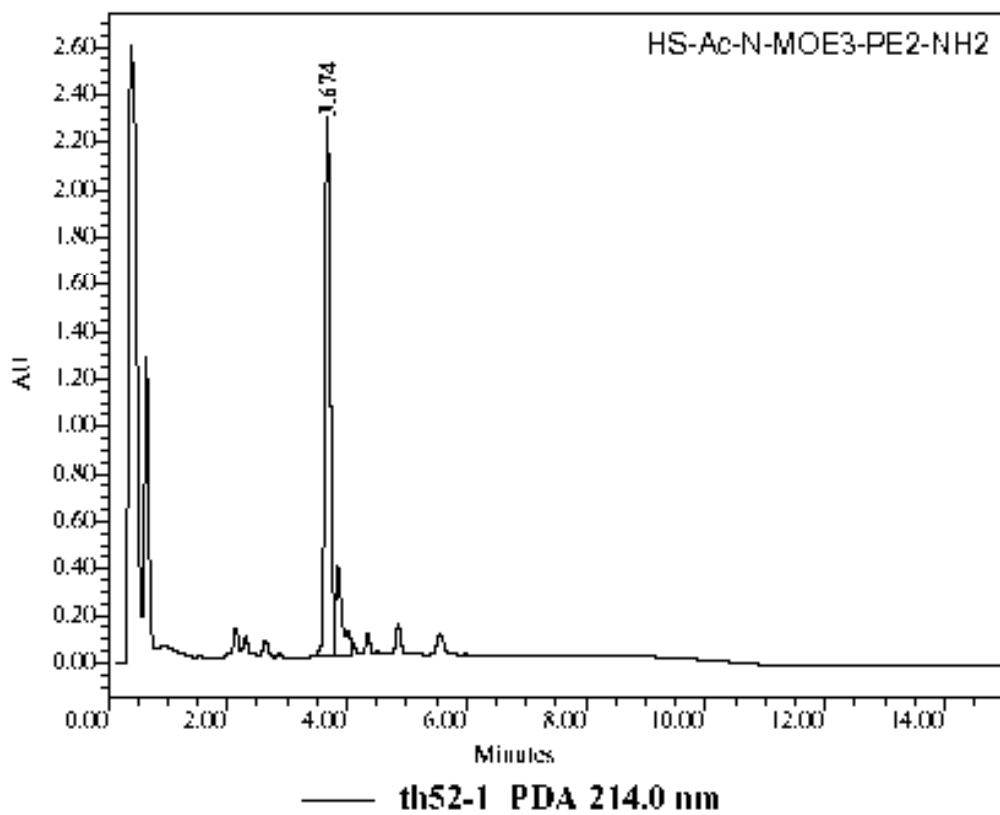
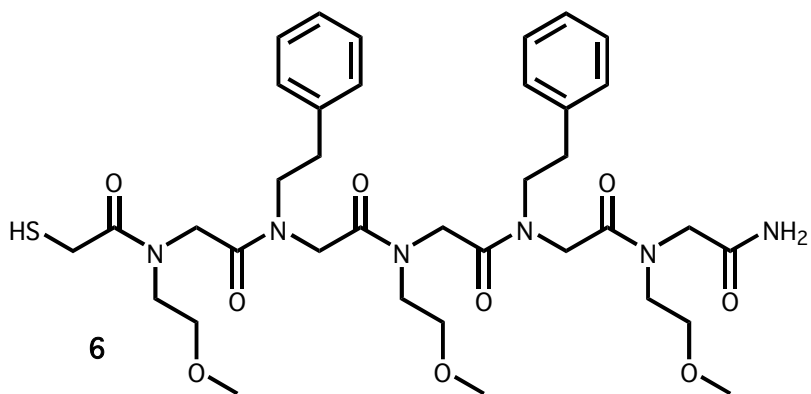


HPLC Chromatogram at 214 nm



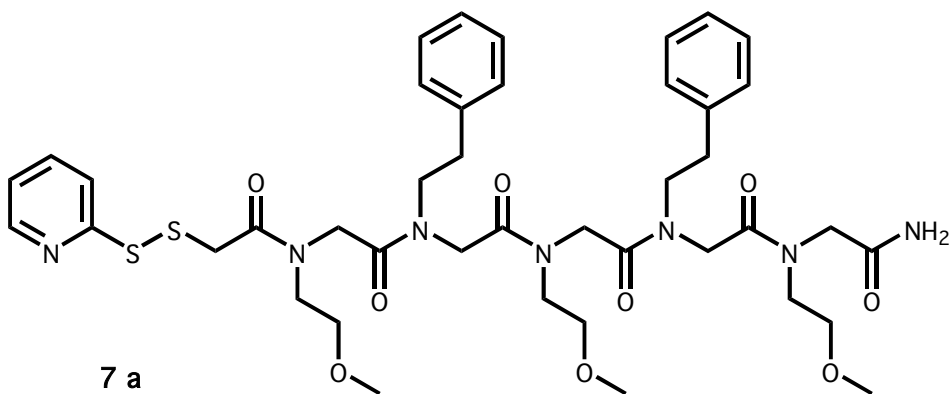
Peak Results C18_Meth_5_95_10min_1mlmin_60C 11/22/02 5

	RT	Area	Height	% Area	% Height	Start Time	End Time
1	3.10	3277523	958492	100.0	100.0	2.940	3.257
Sum		3277523.0	958492.4	100.0	100.0		
Count							

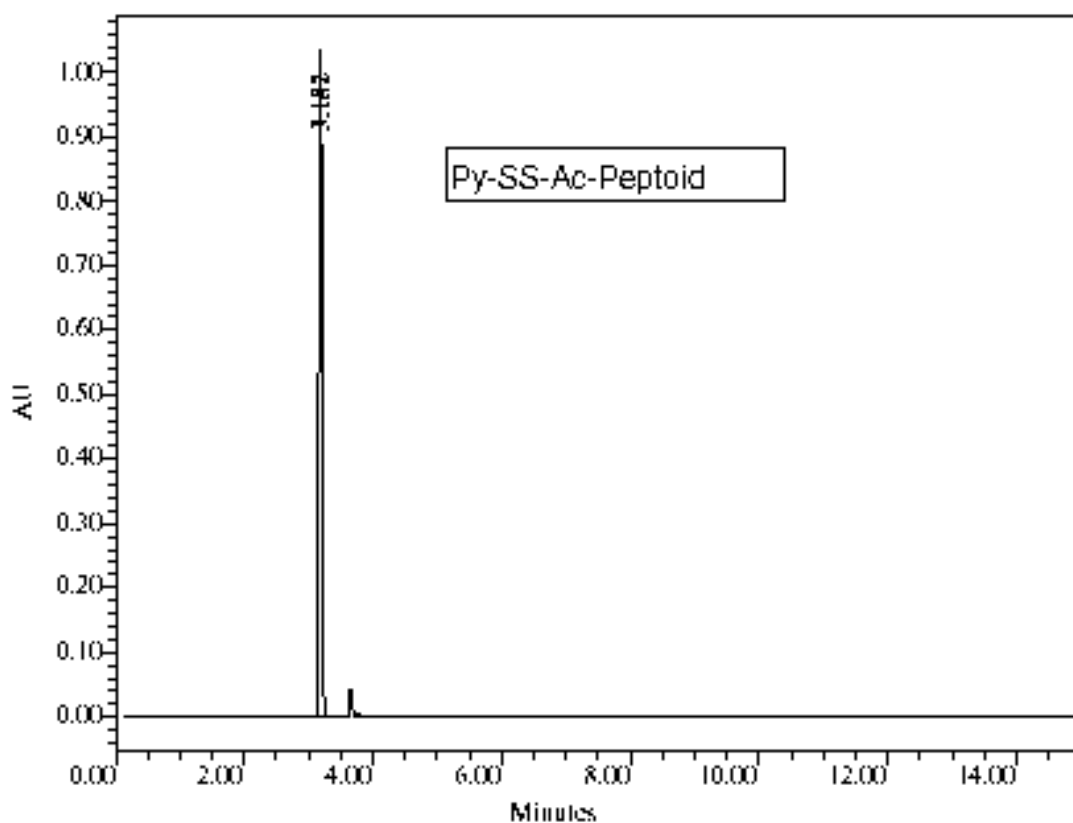


Peak Results C18_Meth_5_95_10min_1mlmin_60C 10/17/01 3

	RT	Area	Height	% Area	% Height	Start Time	End Time
1	3.67	14798479	2309223	83.7	86.0	3.448	3.798
2	3.85	2883195	376733	16.3	14.0	3.798	4.065
Sum		17681674.3	2685956.7	100.0	100.0		
Count							



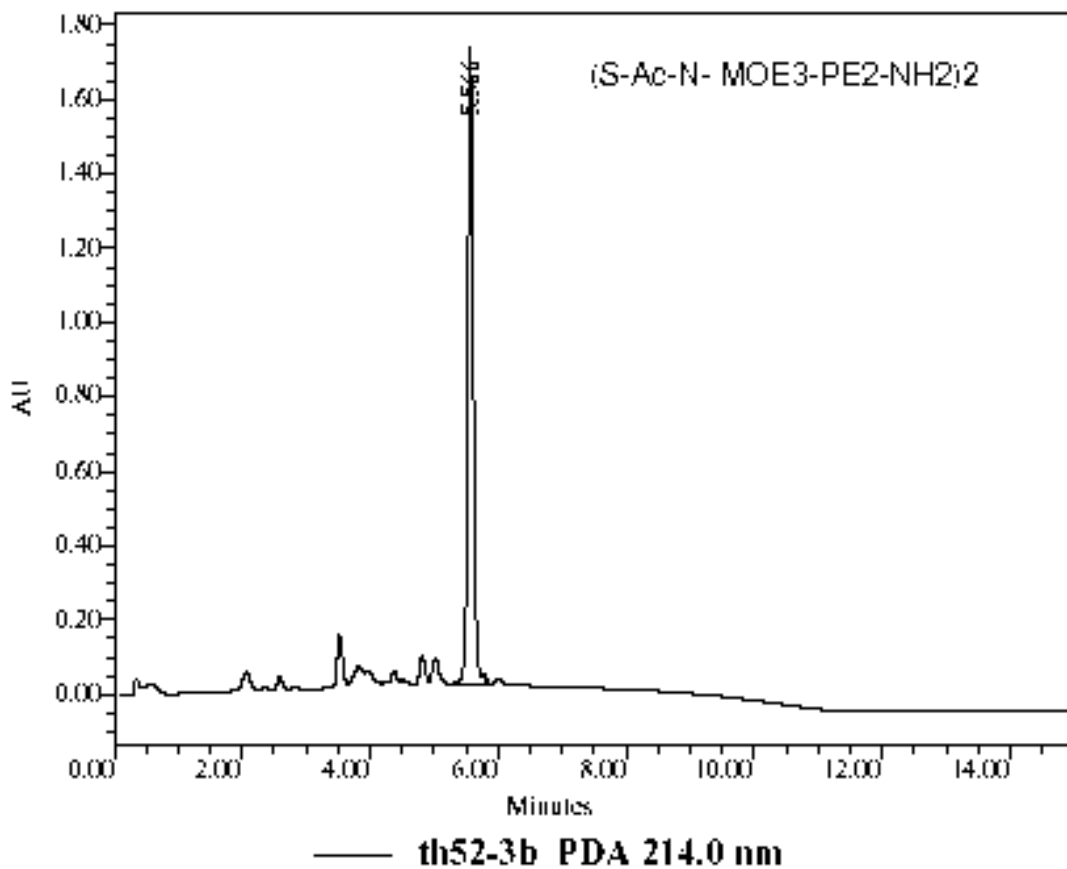
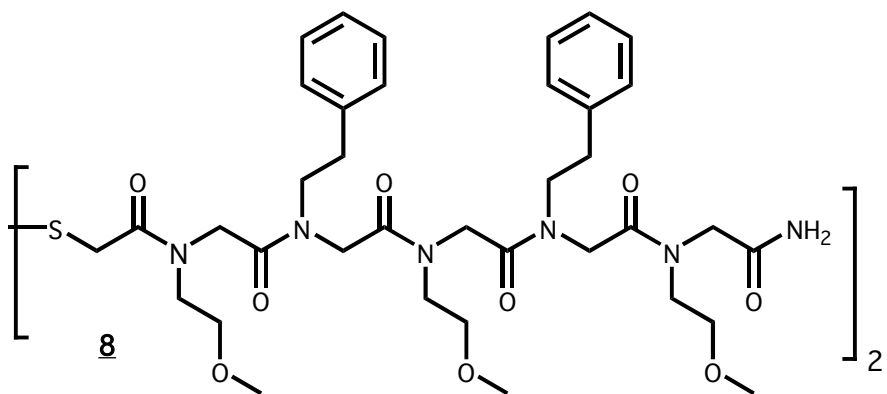
HPLC Chromatogram at 214 nm



— th190-1f PDA 214.0 nm

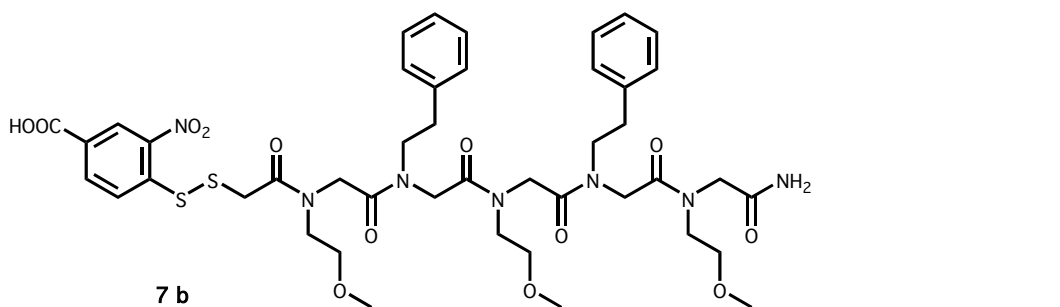
Peak Results C18_Meth_5_95_10min_1mlmin_60C 11/25/02 5

	RT	Area	Height	% Area	% Height	Start Time	End Time
1	3.18	3356934	1002565	100.0	100.0	3.095	3.328
Sum		3356934.0	1002564.9	100.0	100.0		
Count							

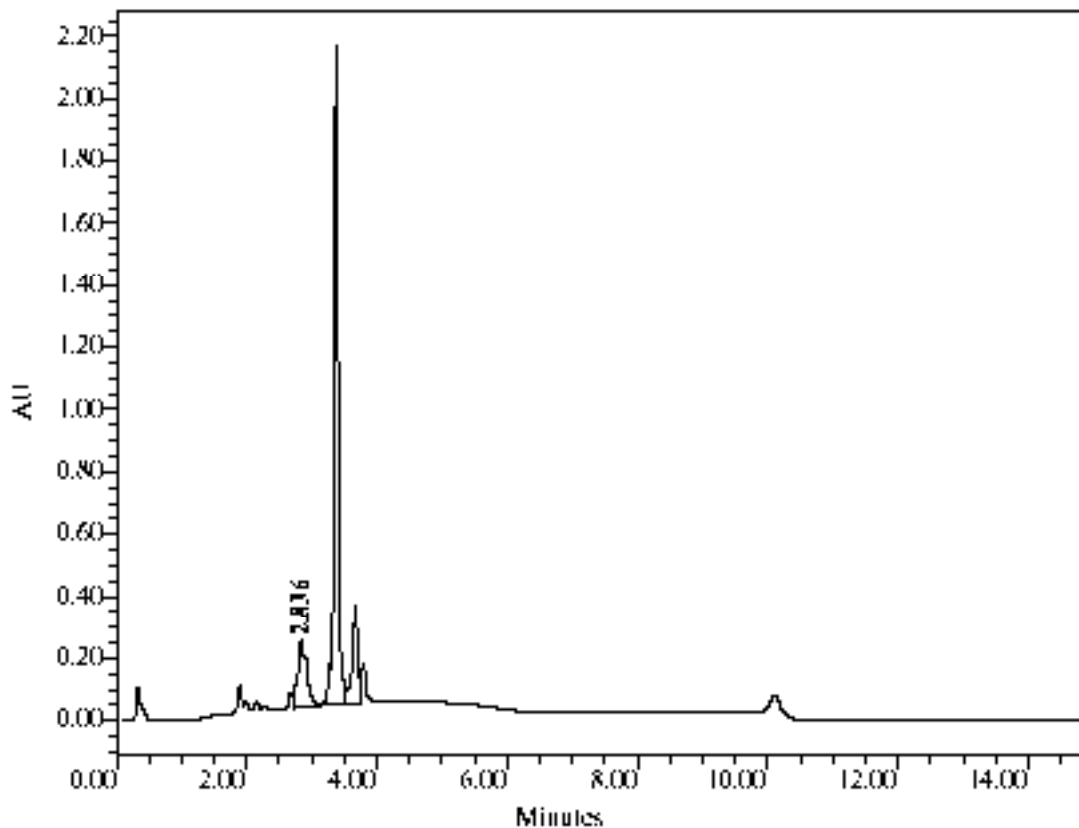


Peak Results C18_Meth_5_95_10min_1mlmin_60C 10/30/01 9

	RT	Area	Height	% Area	% Height	Start Time	End Time
1	5.57	10285985	1717546	100.0	100.0	5.253	5.820
Sum		10285985.3	1717546.2	100.0	100.0		
Count							



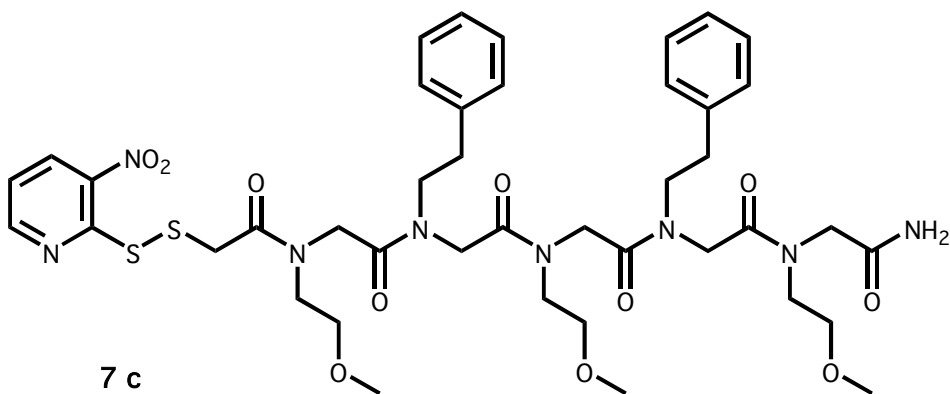
HPLC Chromatogram at 214 nm



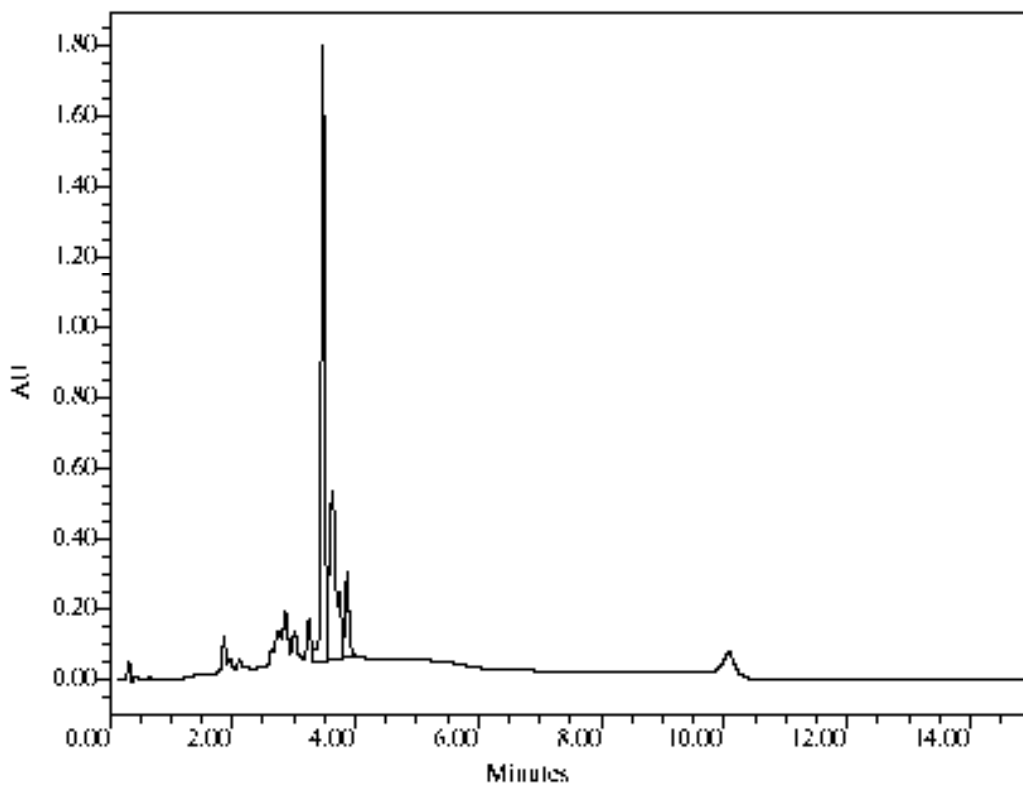
— th190-2f PDA 214.0 nm

Peak Results C18_Meth_5_95_10min_1mlmin_60C 11/25/02 €

	RT	Area	Height	% Area	% Height	Start Time	End Time
1	2.84	2189487	214843	16.4	8.3	2.717	3.150
2	3.37	9376101	2080612	70.0	80.0	3.150	3.517
3	3.67	1823211	304569	13.6	11.7	3.517	3.750
Sum		13388798.5	2600023.6	100.0	100.0		
Count							



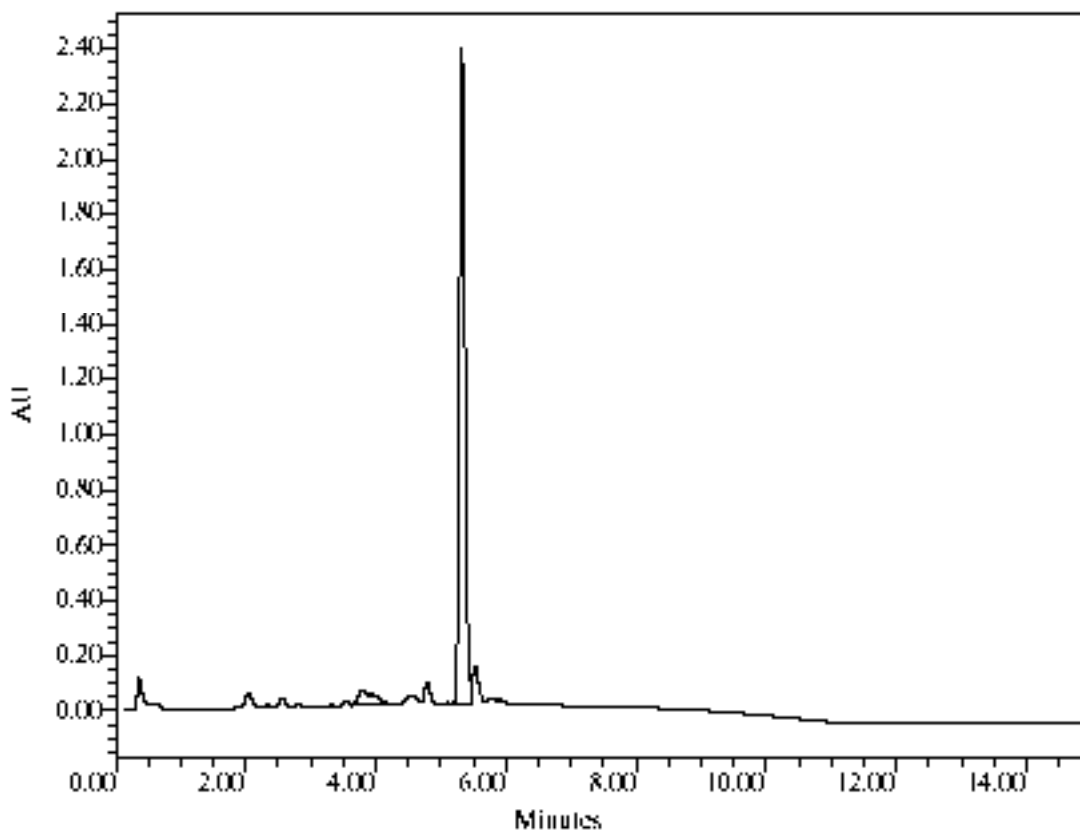
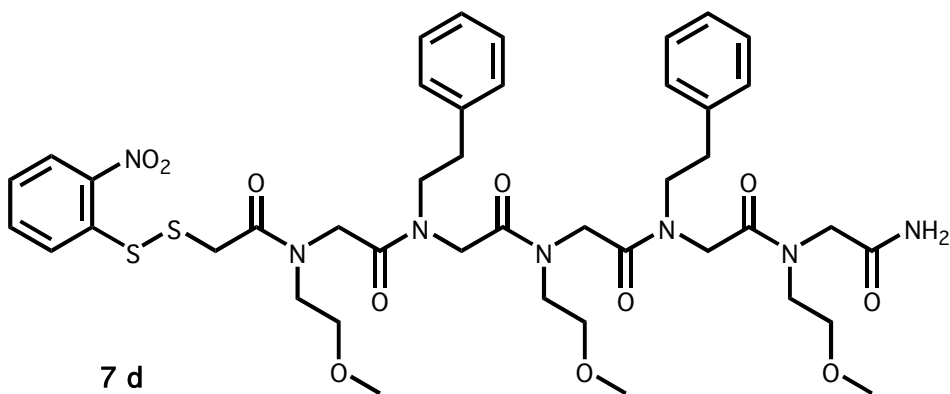
HPLC Chromatogram at 214 nm



— th190-3f PDA 214.0 nm

Peak Results C18_Meth_5_95_10min_1mlmin_60C 11/25/02 €

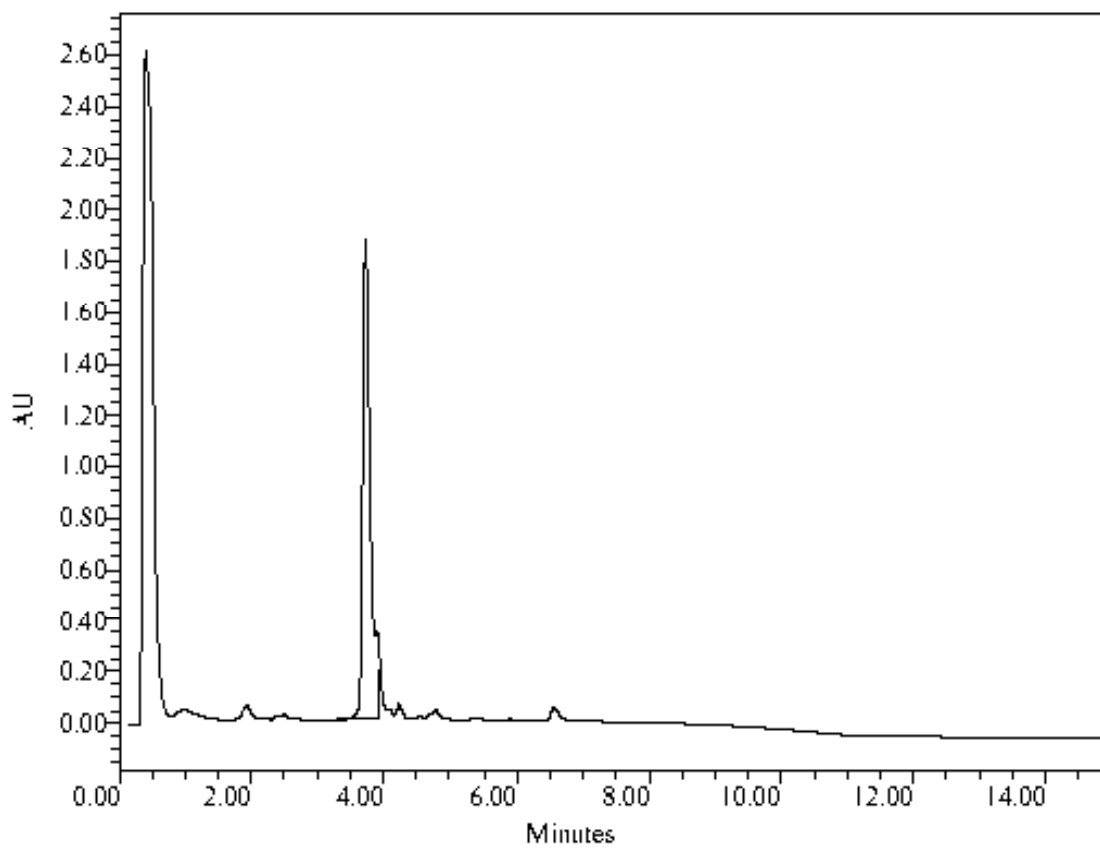
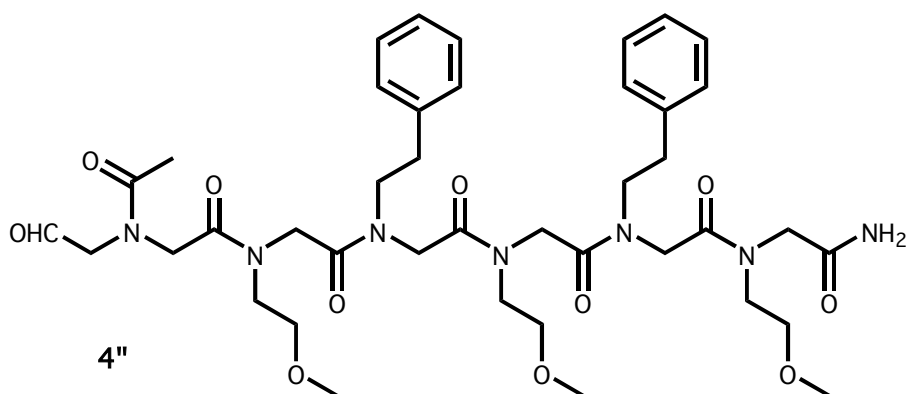
	RT	Area	Height	% Area	% Height	Start Time	End Time
1	3.47	6961893	1705691	57.6	70.3	3.310	3.543
2	3.63	3965057	480285	32.8	19.8	3.543	3.793
3	3.86	1170135	241498	9.7	9.9	3.793	4.127
Sum		12097084.3	2427474.9	100.0	100.0		
Count							



— th52-2b PDA 214.0 nm

Peak Results C18_Meth_5_95_10min_1mlmin_60C 10/30/01 8

	RT	Area	Height	% Area	% Height	Start Time	End Time
1	3.80	1017322	59142	6.7	2.4	3.642	4.258
2	5.32	14091345	2368855	93.3	97.6	5.125	5.458
Sum		15108667.8	2427996.5	100.0	100.0		
Count							

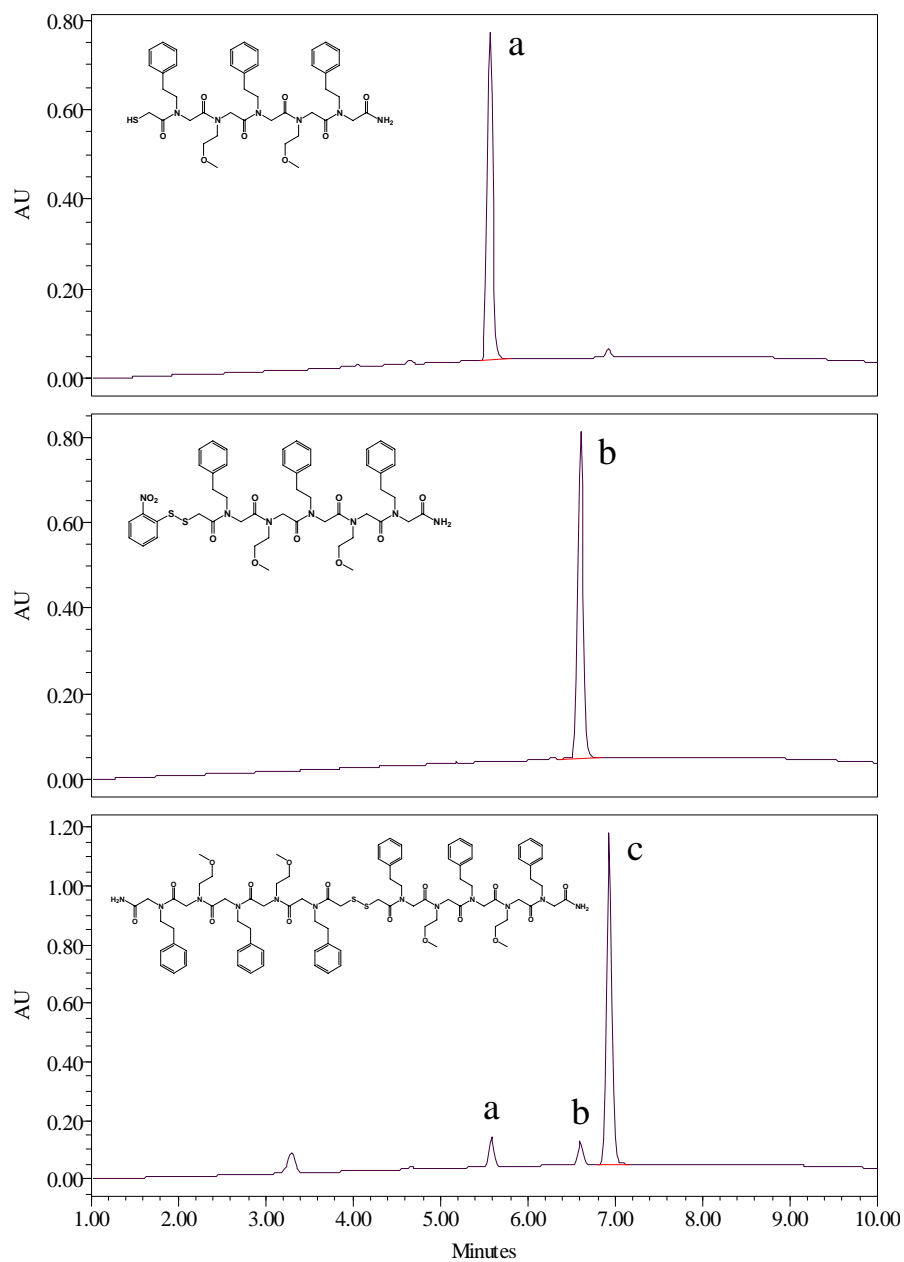


— th4a PDA 214.0 nm

Peak Results C18_Meth_5_95_10min_1mlmin_60C 1/10/02 5:

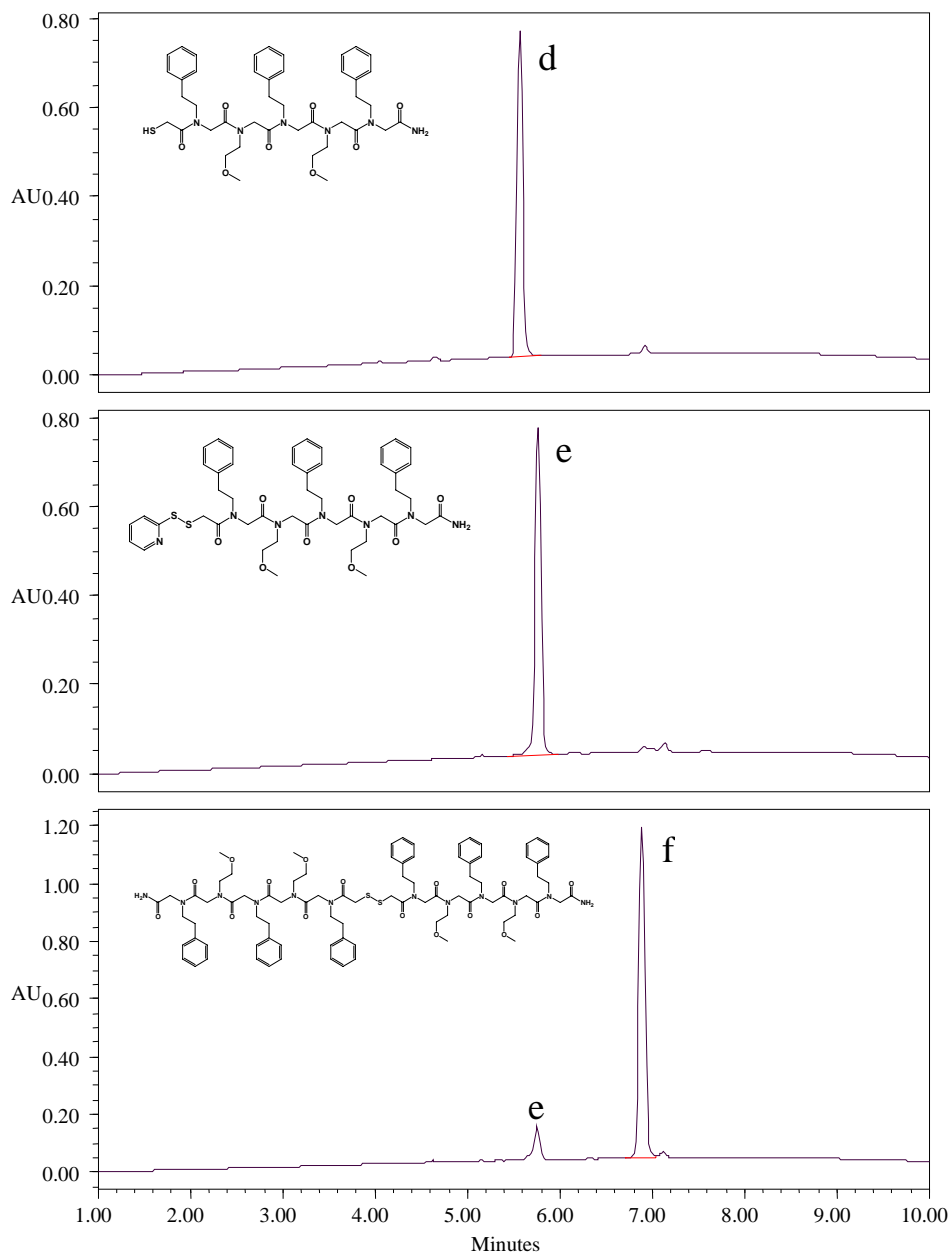
	RT	Area	Height	% Area	% Height	Start Time	End Time
1	3.71	15588961	1902401	100.0	100.0	3.312	3.928
Sum		15588960.8	1902401.0	100.0	100.0		
Count							

Disulfide linkage between two peptoids with N-terminus functional groups:
sulfhydryl and activated nitrophenyl disulfide



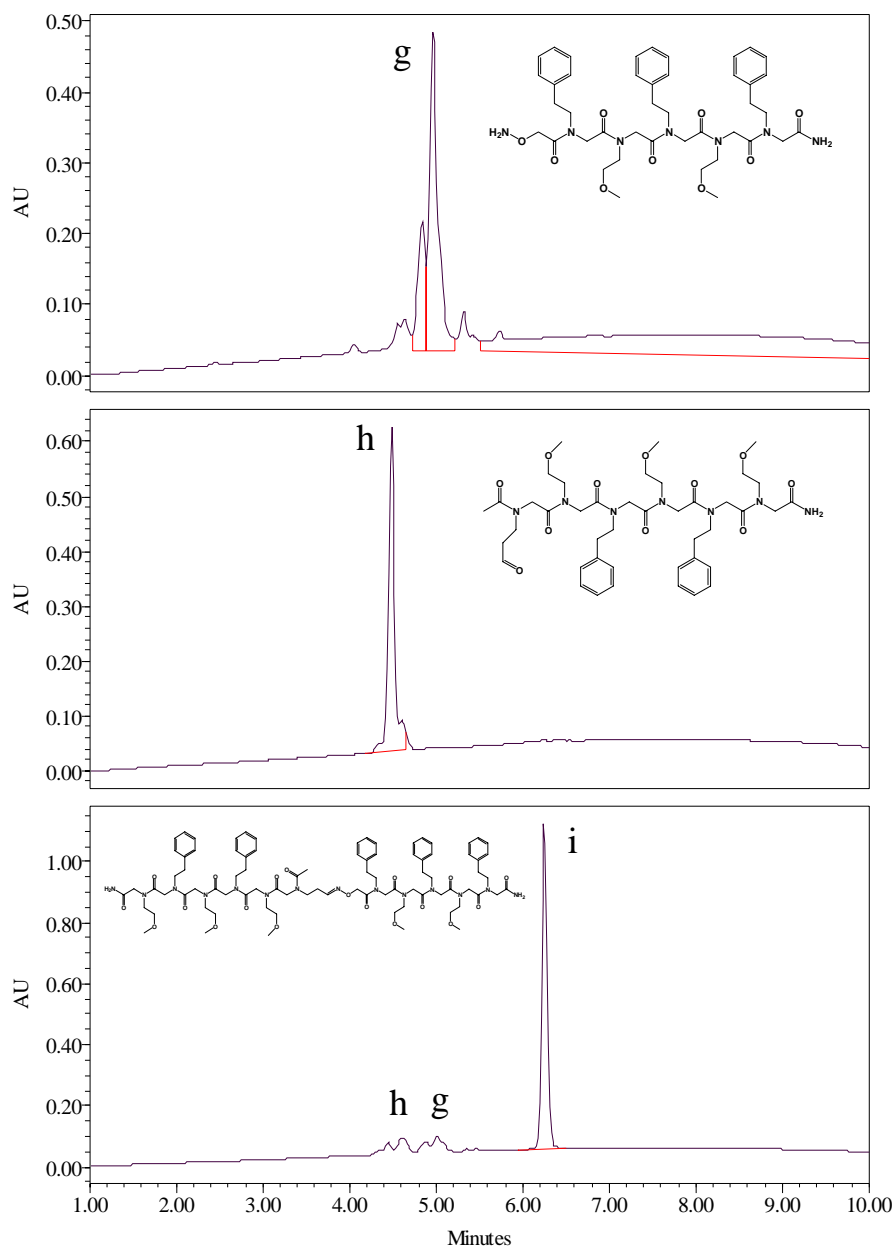
Peptoid	Peak retention time (minute)	Area	%
a	5.59	428524	7.5
b	6.60	260527	4.6
c	6.93	5013275	87.9

Disulfide Linkage between two peptoids with N-terminus functional groups:
sulfhydryl and activated pyridyl disulfide



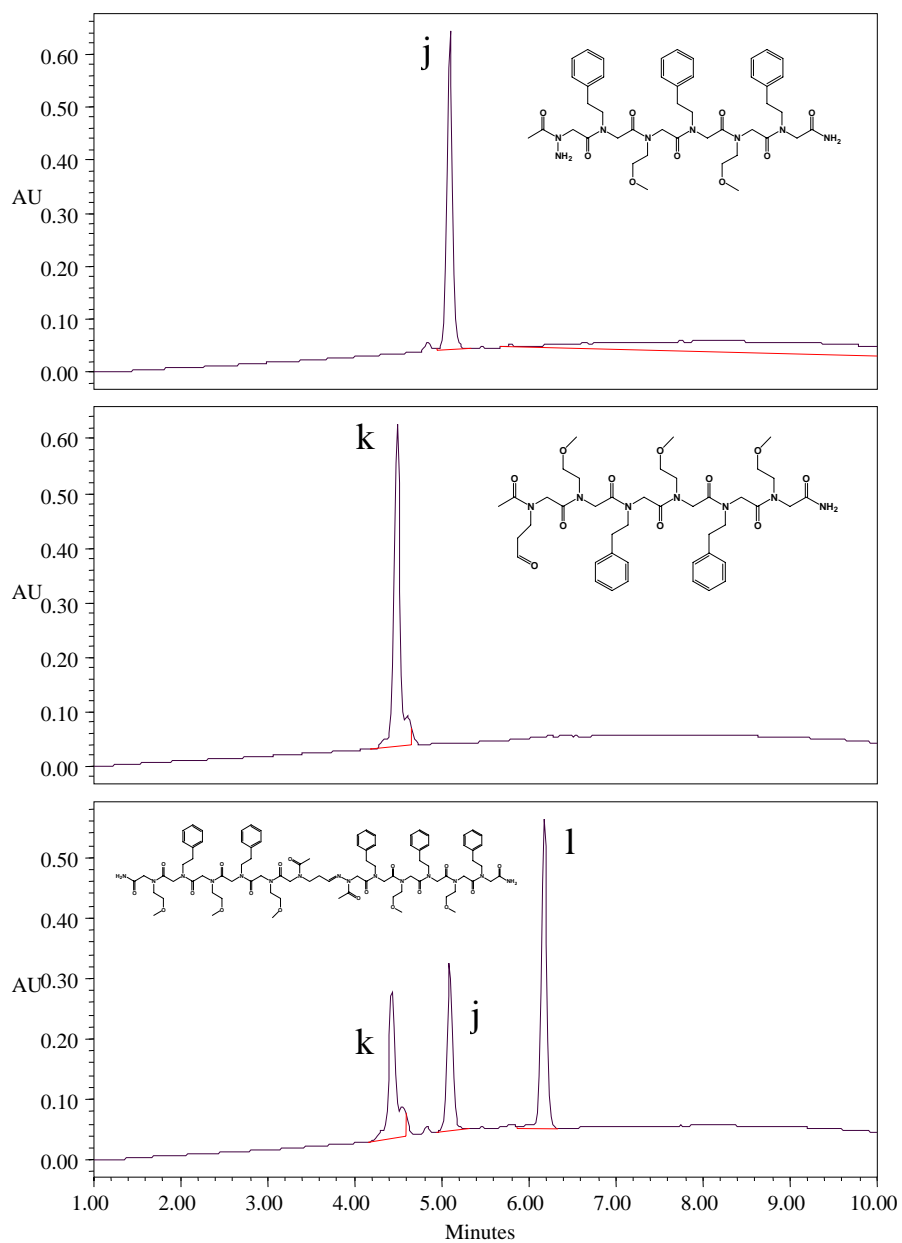
Peptoid	Peak retention time (minute)	Area	%
e	5.75	401339	7.3
f	6.89	5115190	92.7

Oxime linkage between two peptoids with N-terminus functional groups:
aminoxyacetamide and aldehyde



Peptoid	Peak retention time (minute)	Area	%
h	4.61	449513	7.8
g	5.02	525249	9.1
i	6.25	4795181	83.1

Hydrazone linkage between two peptoids with N-terminus functional groups:
hydrazide and aldehyde



Peptoid	Peak retention time (minute)	Area	%
k	4.43	1513950	29.5
j	5.09	1326194	25.8
l	6.18	2299889	44.7